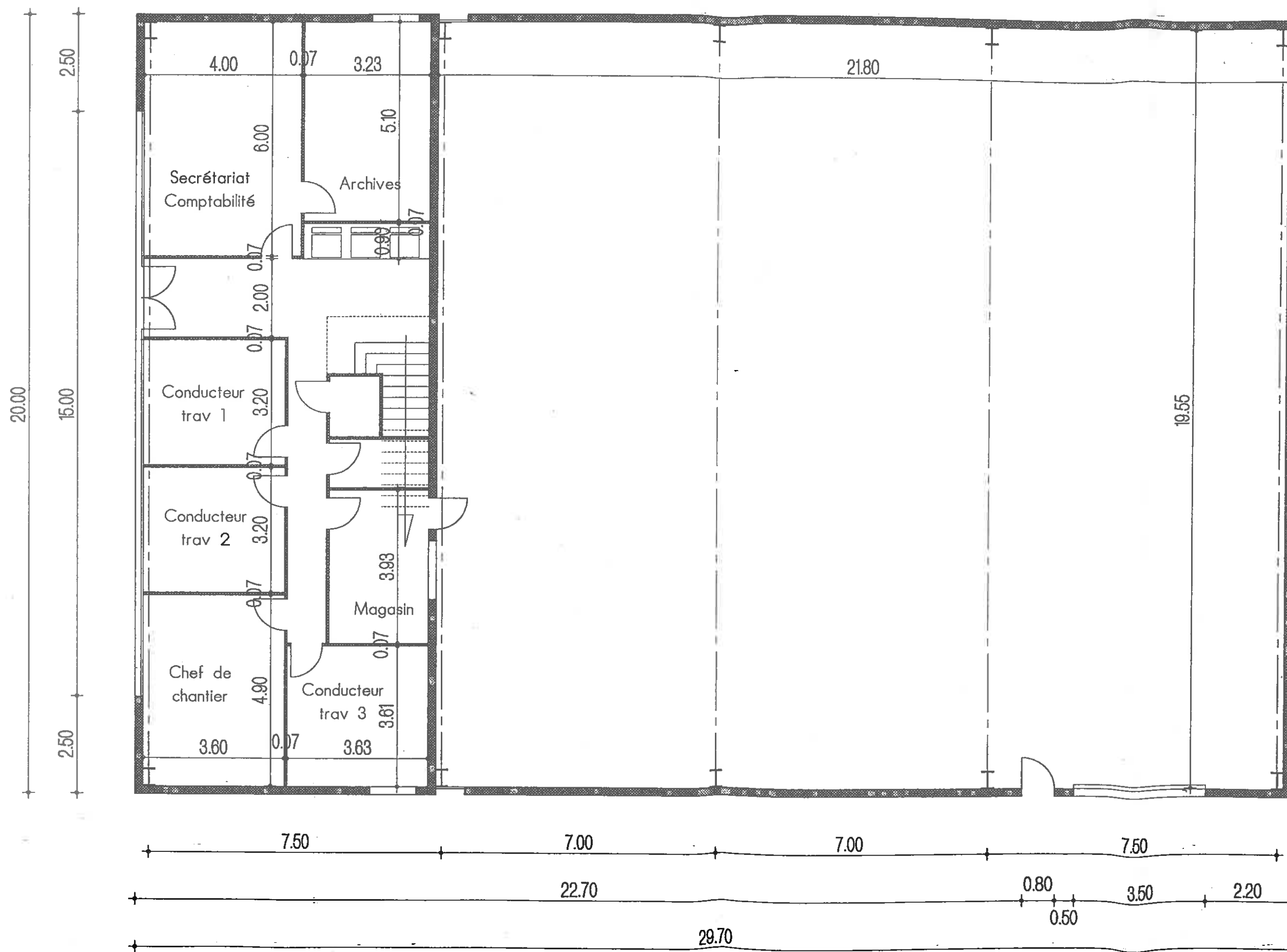
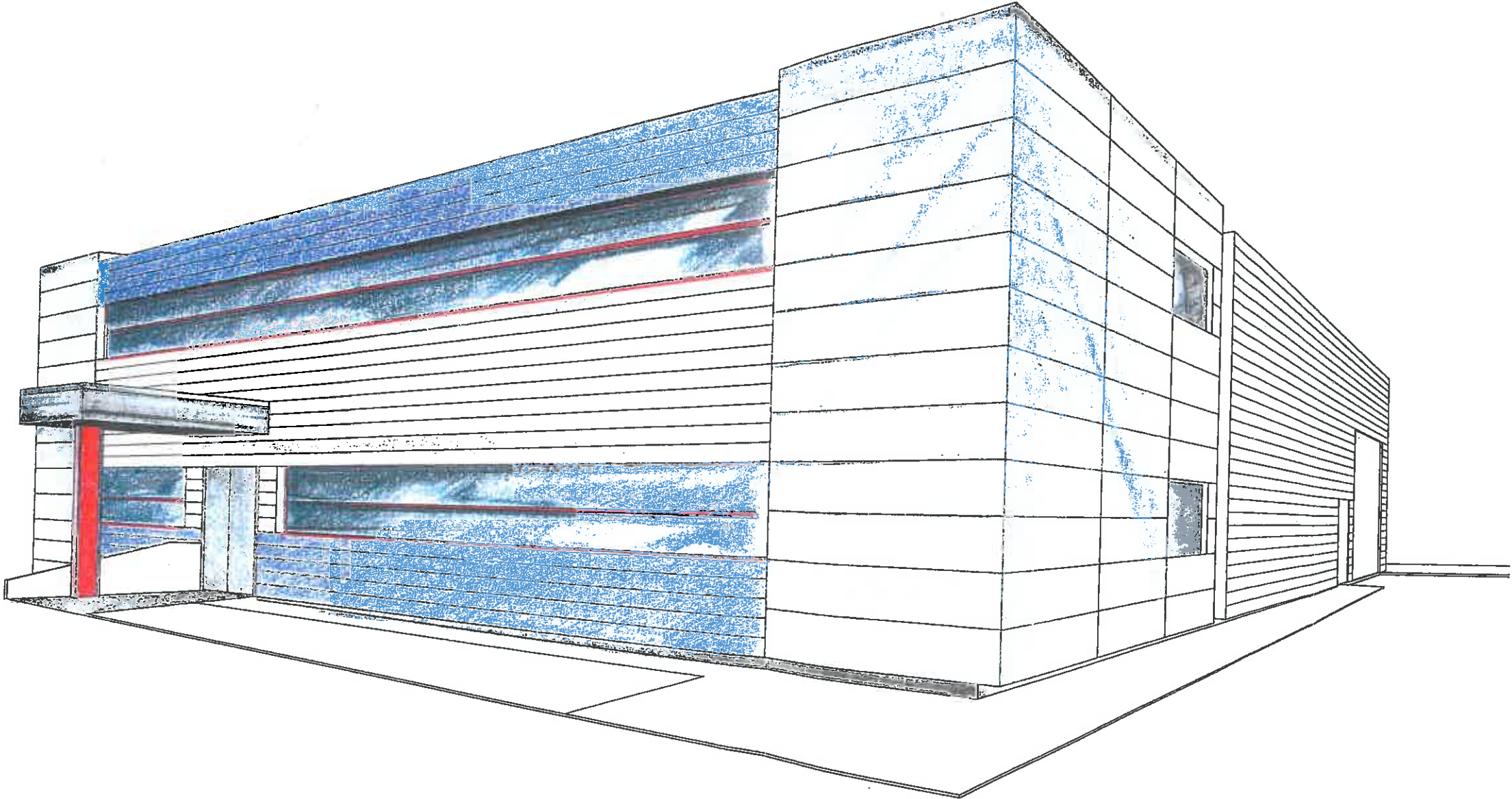
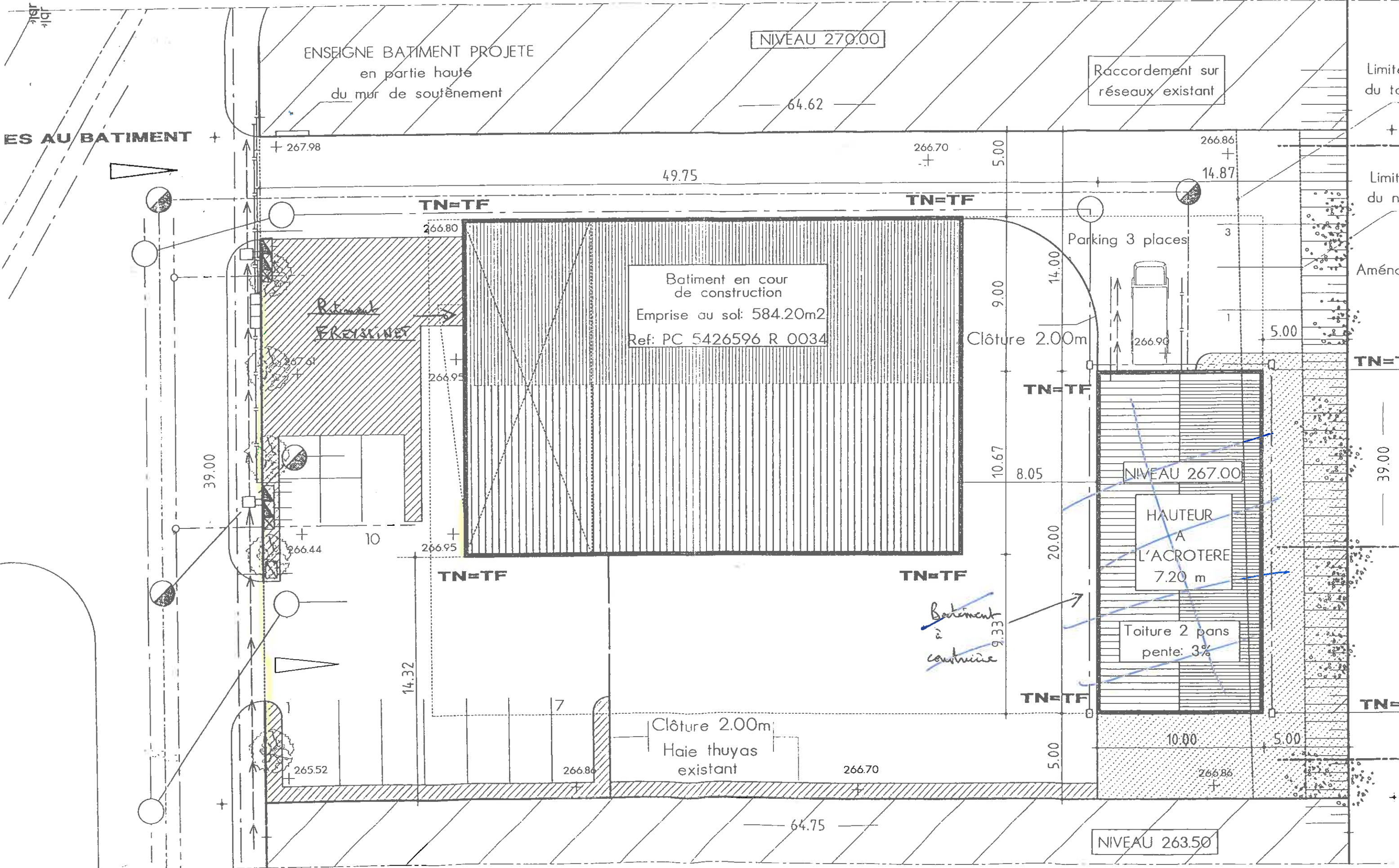


PLAN R-d-C Echelle: 1/ 100



PERSPECTIVE





Batiment en cour
de construction
Emprise au sol: 584.20m²
Ref: PC 5426596 R 0034

NIVEAU 267.00

HAUTEUR
A
L'ACROTERE
7.20 m

Toiture 2 pans
pente: 3%

*Batiment
à
construire*

NIVEAU 263.50